

Where AI Meets Higher Education

# KELI: K-University AI Edutech and Learning Initiative

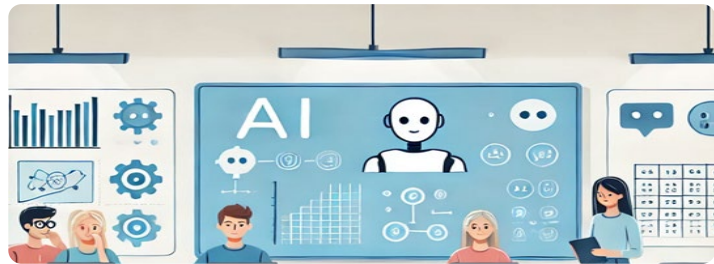
29<sup>th</sup> October, 2025



# 01 KELI



KELI **develops, shares, and expands** the K-University model to build AI-based learner-centered education and lead innovation in higher education through collaborative ecosystems.



**Joint Development  
and Expansion of  
K-University Model**



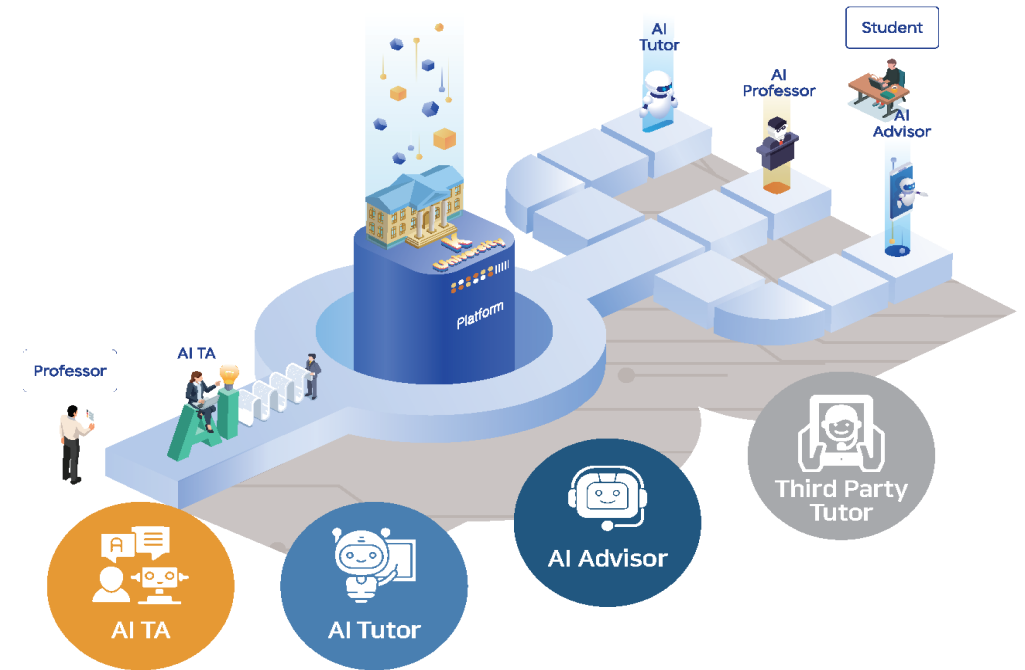
**Shared Services,  
Courseware, and Data**



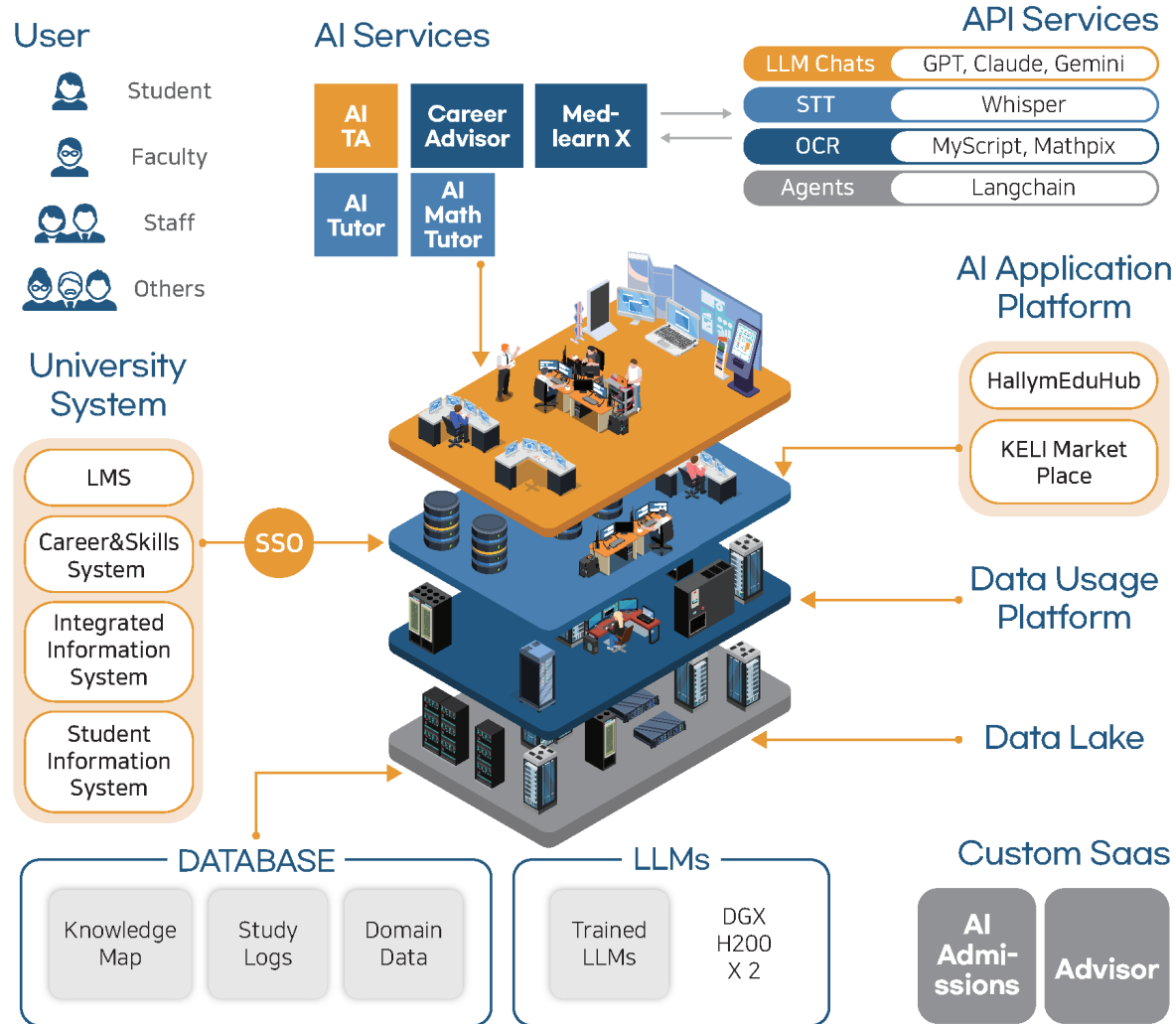
**Collaborative Ecosystems  
and International  
Cooperation**

**Unite. Innovate. Transform.**

# 02 KELI Roadmap



# 03 KELI Education Platform



## AI Course Implementation (2024-2025)

Third Party AI-Tutor 7 cases

AI-TA In Class 9 cases

AI-Tutor In Class 19 cases

Gen-AI In Class 281 cases



# 04 KELI Services

## AI Teaching Assistant (TA)



AI agent-based integrated support service for faculty's teaching, research, and administrative tasks

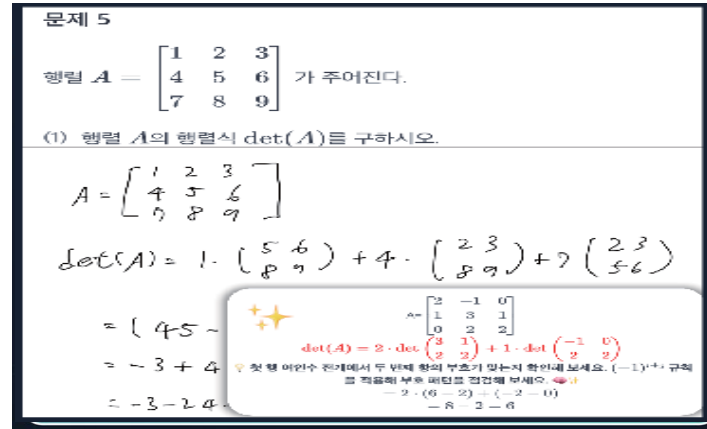
### Teaching Support

- Auto-generate syllabi with weekly plans
- Create lecture materials in PPT/PDF formats
- Generate exams with answers and explanations

### Research Support

- Personalized resource recommendations based on research profile
- Academic domain-optimized LLM responses
- Automated Q&A for institutional policies and announcements

## AI Linear Algebra Tutor (Math)



Supports from handwriting recognition to concept explanation, correction, and auto-grading

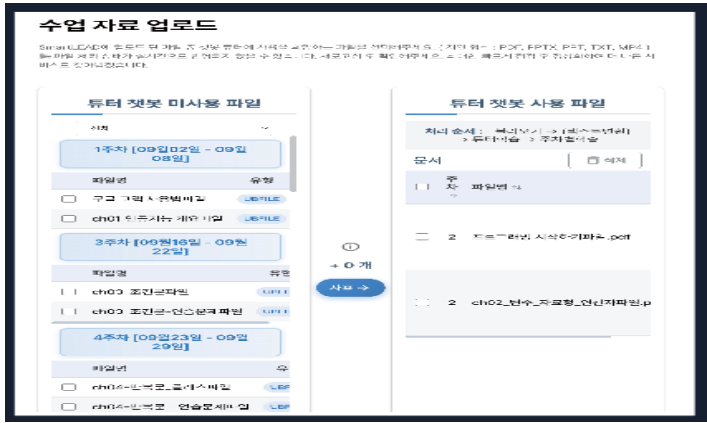
### Real-time recognition of handwritten math solutions

- Interactive whiteboard for problem solving
- Option to upload solution photos

### Math solution correction

- Line-by-line error check and hints
- Partial grading for descriptive questions

## AI Tutor (General)



AI-powered tutoring service for personalized learning, assessment, and collaboration

### Before Class

- Connect SmartLead or upload materials
- Generate customizable question banks

### During Class

- Real-time Q&A from class materials
- Provide quizzes with auto-grading and feedback

### After Class

- Analyze learning history and progress
- Visualize results with instructor dashboard

# 04 KELI Services

## MedLearn-X (Medical)



MedLearn-X is an AI-powered tutoring platform to analyze the latest medical guidelines and case studies, offering a personalized and optimized learning experience.

### Case Study-based Quizzes

- Generates customizable, scenario-based medical questions

### PPT-auto generation

- Structures and creates lecture slides from vast medical textbooks and papers, saving preparation time

### MedCast (Podcast)

Automatically creates short, focused audio summaries of complex medical concepts and new clinical findings

## Course to Career



AI assistant for connecting university curricula with career pathways

### Curriculum Recommendation

- Suggests optimal courses aligned with desired jobs/skills to guide efficient learning

### Job/Skill Matching and Counseling

- Maps required skills to curriculum and recommends learning paths
- Suggests job postings linked to selected occupations and skills

### C2C Portfolio

- Builds a portfolio with skills, achievements, and completed curricula

## Researcher Matching



AI researcher matching service that connects researchers and projects through similarity analysis and ranking

### Question Processing & Intent Analysis

- Analyzes user intent from RFPs and natural language questions
- Supports multi-turn conversations to maintain flow

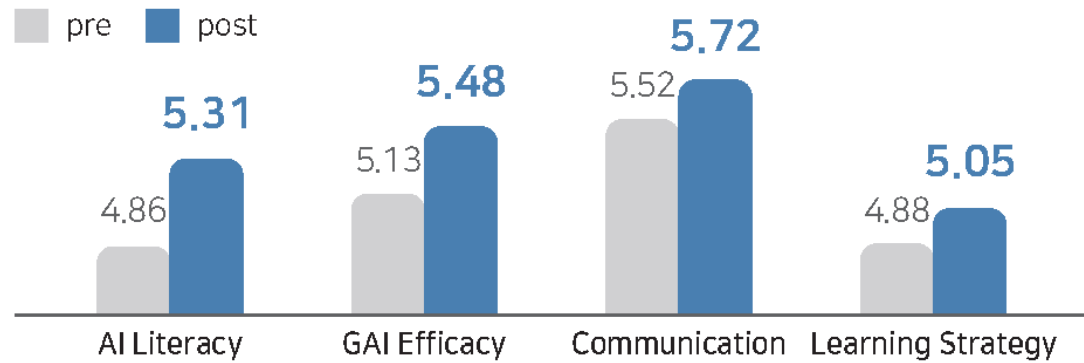
### Researcher Matching & Recommendation

- Analyzes similarity between queries and researcher papers/projects
- Provides rationale for matches through analysis of related papers and tasks

# 04 KELI Services

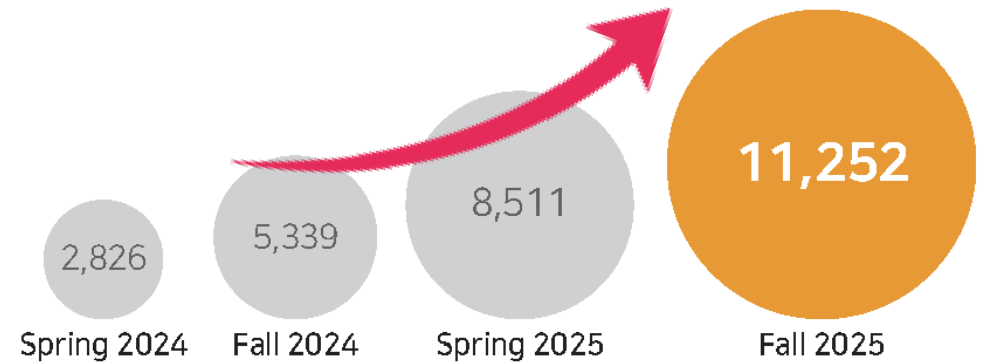
## Accelerate Student Learning

Change in Learning Competencies (Spring 2025)



With AI, students' learning competencies significantly improved in one semester

Cumulative Number of Students



Over 11,000 students have experienced Hallym's AI education

# 05 KELI Projects

## Hallym (2024-2025)



Medical education & Academic evaluation



AI-based learning platforms



Criminal investigation training



AI-based educational tools

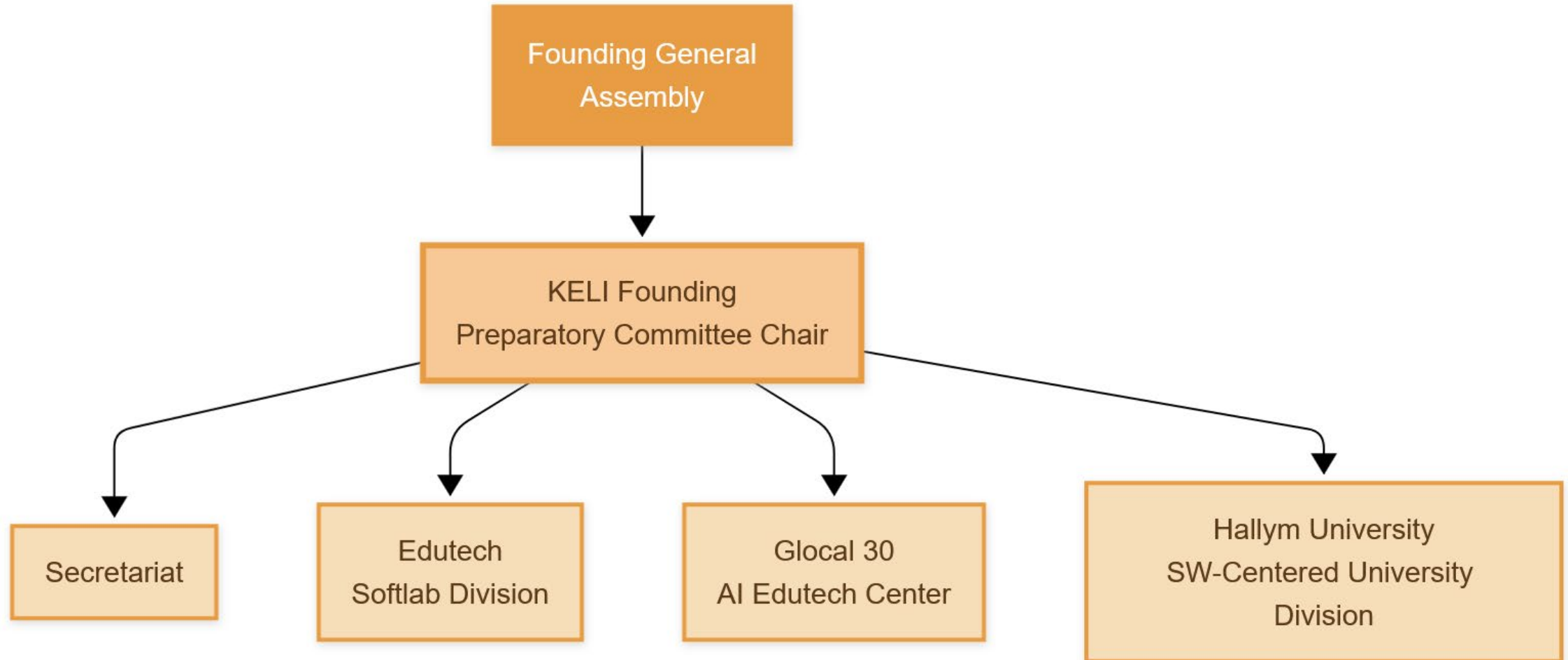


AI best practices in education



Domain-specific learning datasets

# 06 KELI Foundation



# 07 Join Us!

Define Education's Next Chapter:

The Future of Higher Education is  
Collaboration.

KELI Leads the Way.

